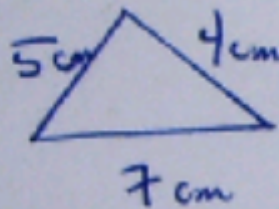




If the 2 triangles are proportionate to each other, find the values for  $x$  &  $y$

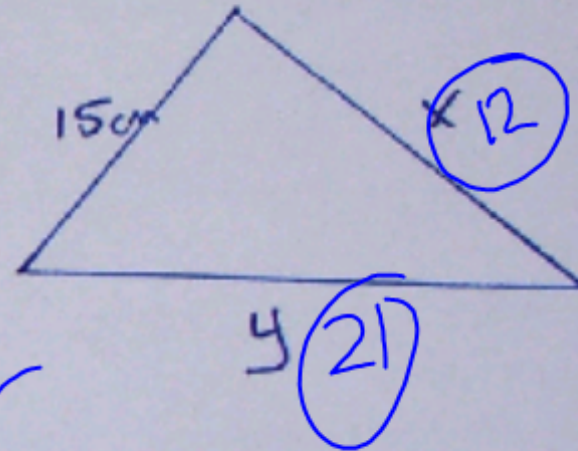


$$5 \overline{) 15}^3$$

$$4 \times \textcircled{3} = 12$$

$$7 \times \textcircled{3} = 21$$

Scale  
Factor



1-desk

2-Wing's desk  
Area

3-window  
doors

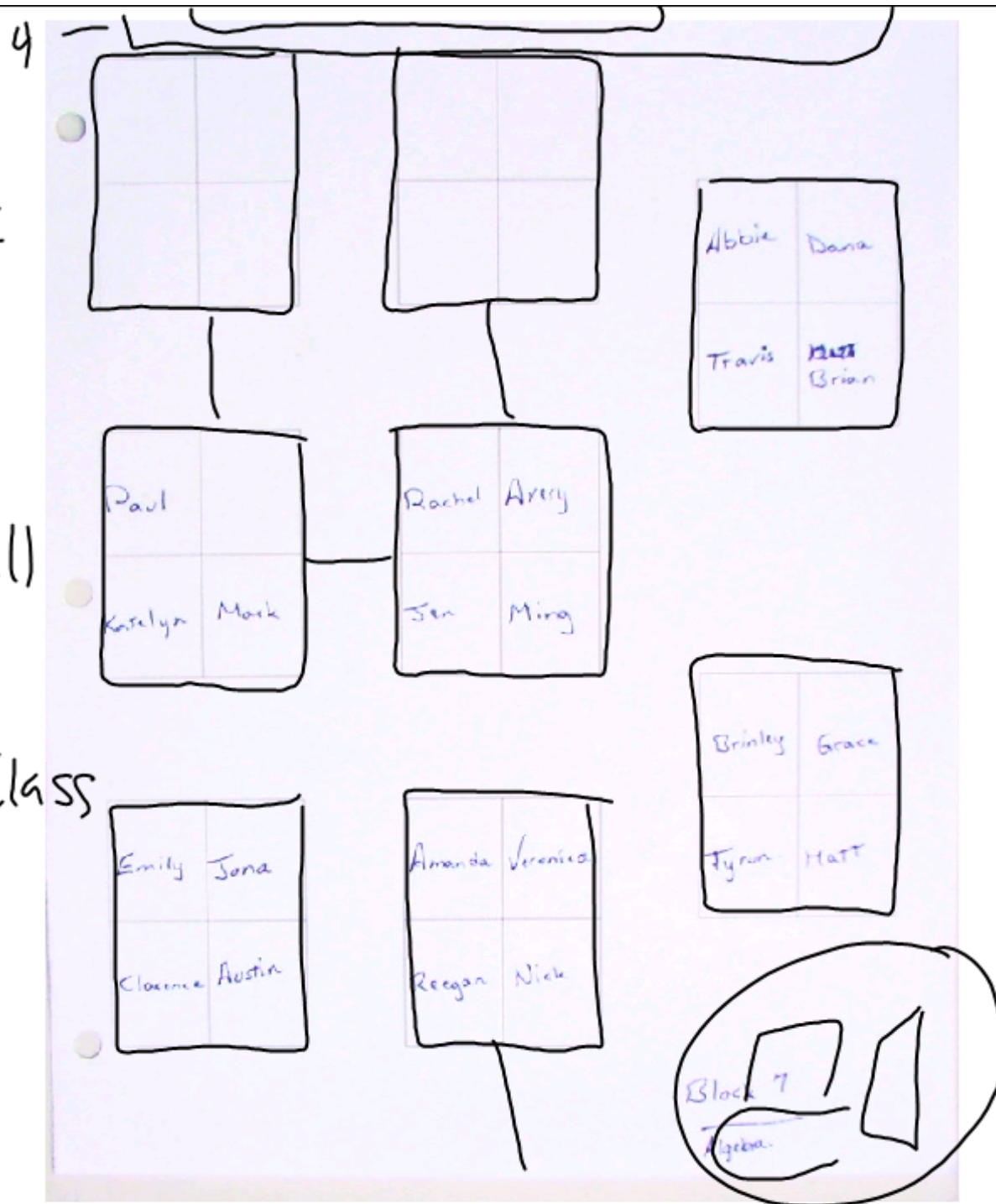
4-Back Wall

5-White

6-Dim of Class

7-lights

8-



HW

3.3 Pg 158 1-9

Pick a room in your house.

① Measure the Length & width

⑤ Measure 5 objects in the room